



BURKHALTER SUMI ARCHITEKTEN

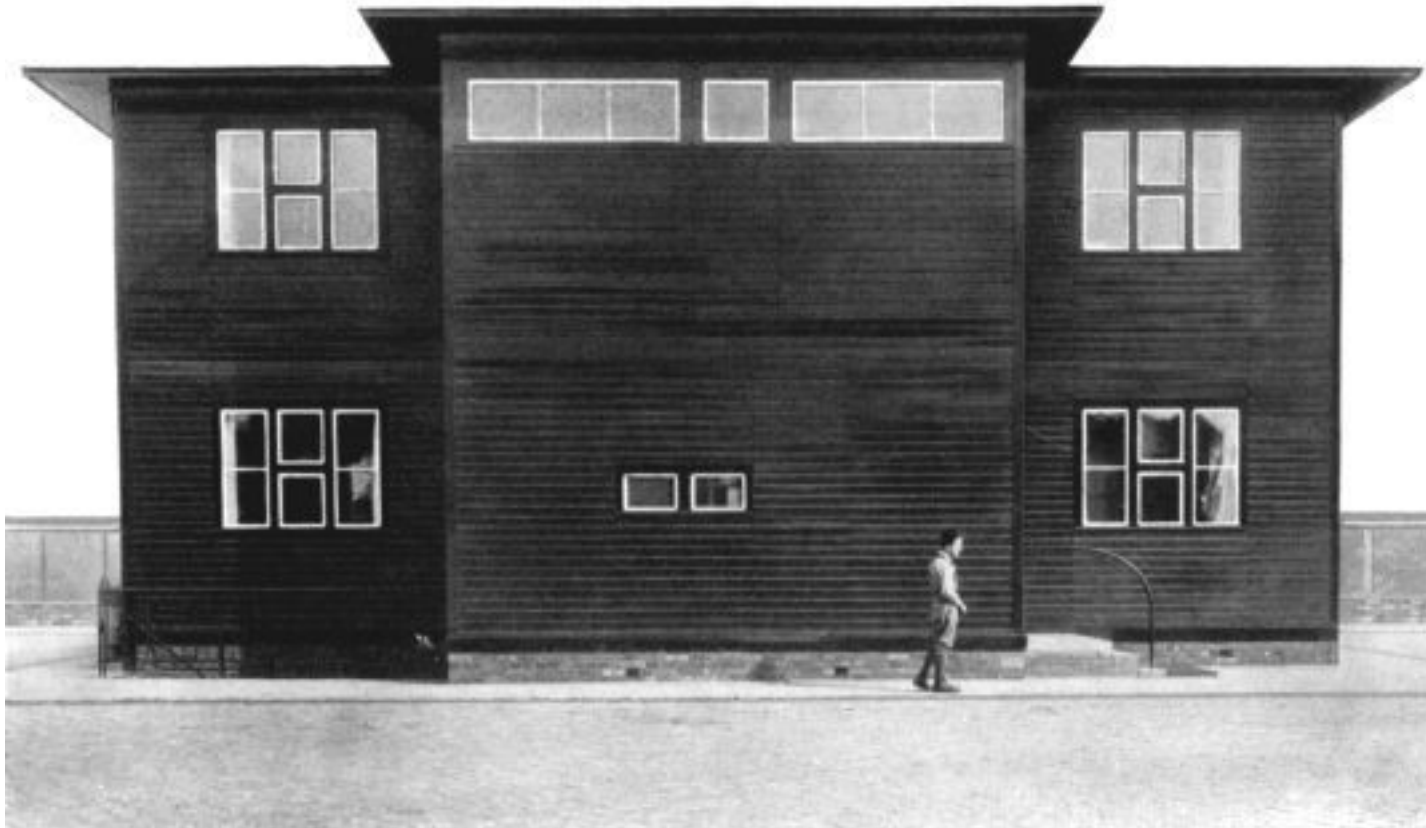
## Marianne Burkhalter

2008 - professor, accademia di architettura, mendrisio; shared professorship with christian sumi  
2008 - member of the "natur-+heimatschutzkommission", uri  
2006 member of the commission on the „werkbundsiedlung“, munich  
2003 - 2006 member of the commission on the cityscape, zug  
1999 guest professor, EPFL lausanne  
1998 - 2002 member of the commission on the cityscape, zürich  
1990 - 1997 member of the commission on the cityscape, baden  
1987 guest professor, SCI-ARC, los angeles, USA  
1985 - 1987 professional assistant, prof. mariocampi, ETHZ zürich  
as of 1984 shared practice with christian sumi, zurich  
1981 - 1983 professional assistant, prof.klaus vogt, ETHZ zürich  
1977 - 1978 los angeles, studio works  
1970 - 1976 new york, studio works  
1969 - 1972 florenz, superstudio  
1973 - 1975 special auditor, princeton university, USA  
1962 - 1966 trained as technical draughtswoman in the office of hubacher and issler, zurich

## Christian Sumi

2008 - professor, accademia di architettura, mendrisio; shared professorship with marianne burkhalter  
2003 visiting professor university of strathclyde, Glasgow  
2002 - 2008 member of the commission on the cityscape, winterthur  
1999 guest professor, EPFL lausanne  
1994 guest professor, harvard university, cambridge, USA  
1990 - 1991 guest professor, school of architecture, university of geneva  
1989 - 1991 diploma advisor, prof. mario campi, ETHZ zurich  
1985 - 1987 professional assistant, prof.bruno reichlin, school of architecture, university of geneva  
as of 1984 shared practice with marianne burkhalter, zürich  
1980 - 1983 research fellowship at the institut gta (institute for history and theory of architecture), ETHZ zurich; research on Le Corbusier and the immeuble clarté in Geneva  
1978 - 1981 worked at the german archaeological institute in rome with dr.d. mertens  
1977 diploma at the ETHZ with prof. dolf schnebli  
1950 born in biel

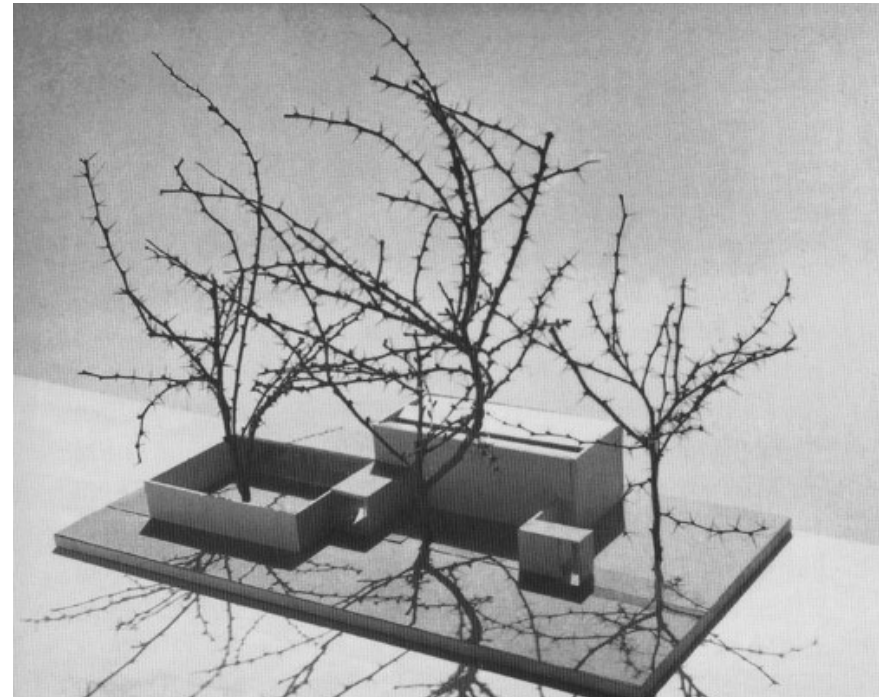
„Timber bulidings must be constructed, stone buildings can be drawn.” (Paul Artaria)



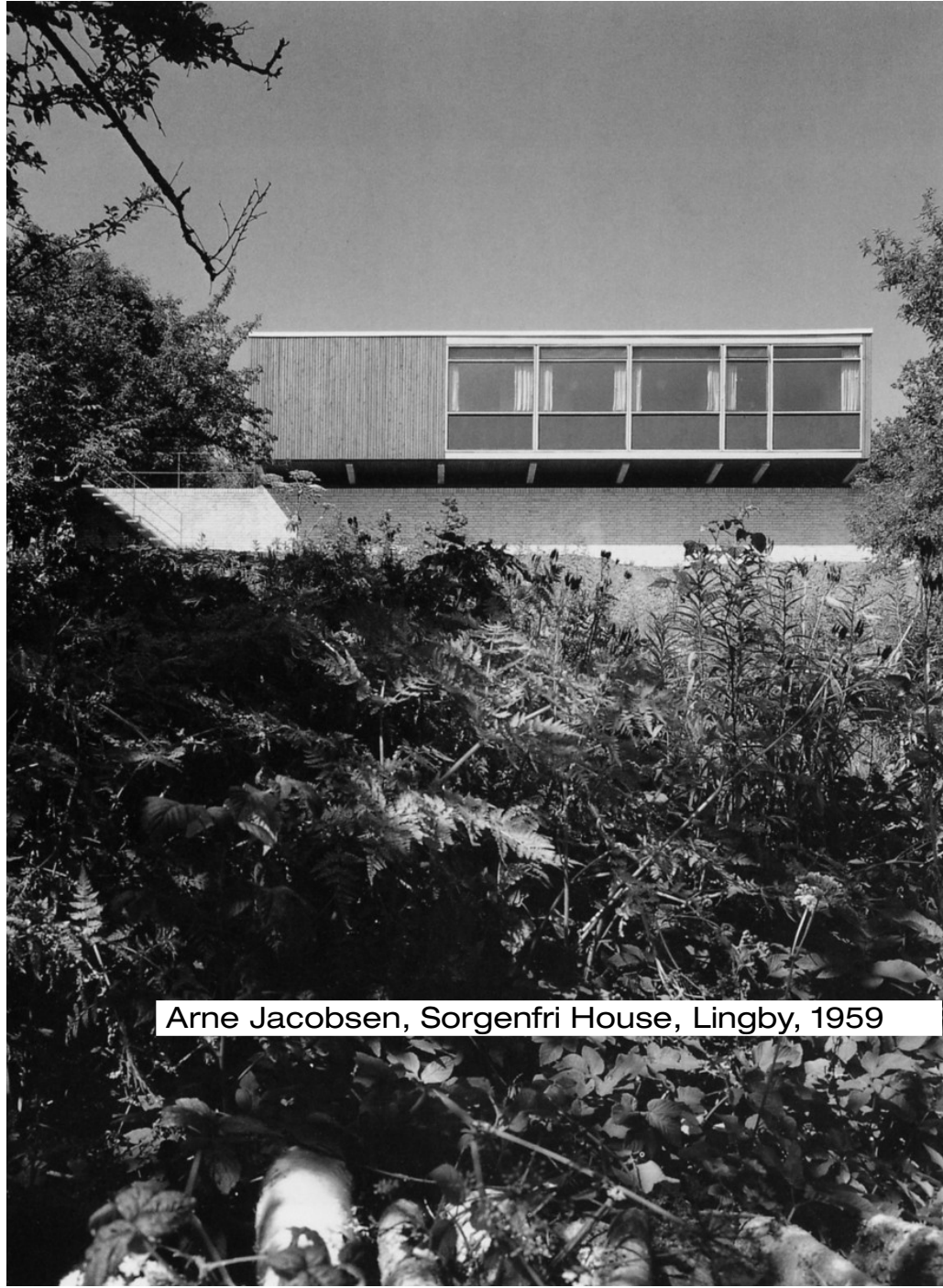
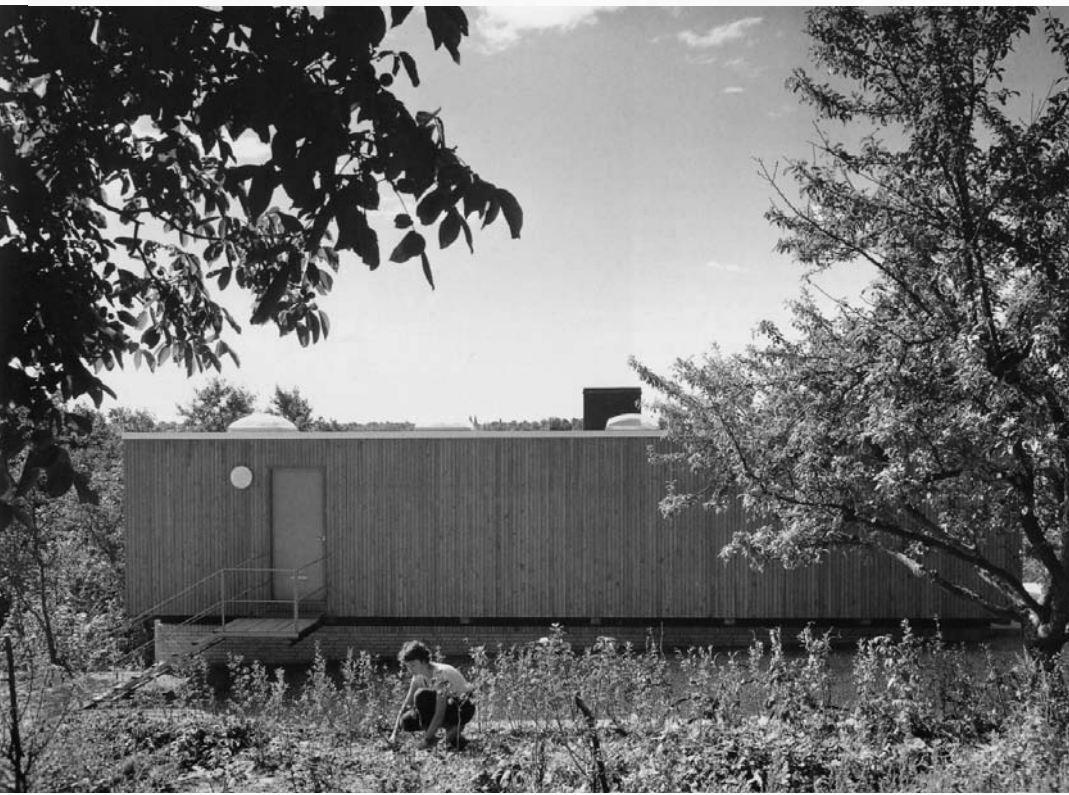
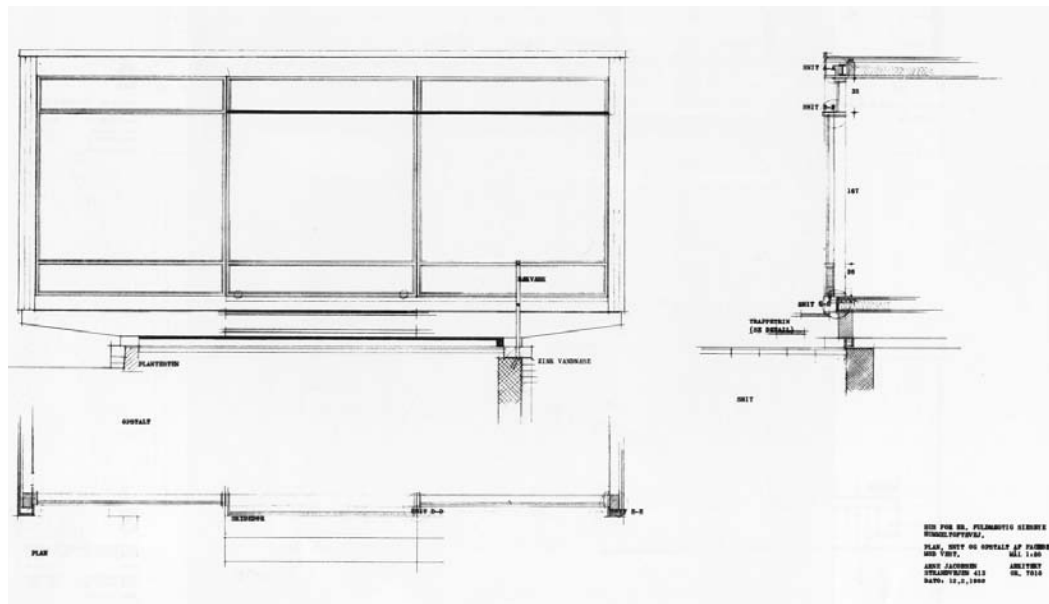
Konrad Wachsmann, BVG (administration building of Public Transportation System), 1928



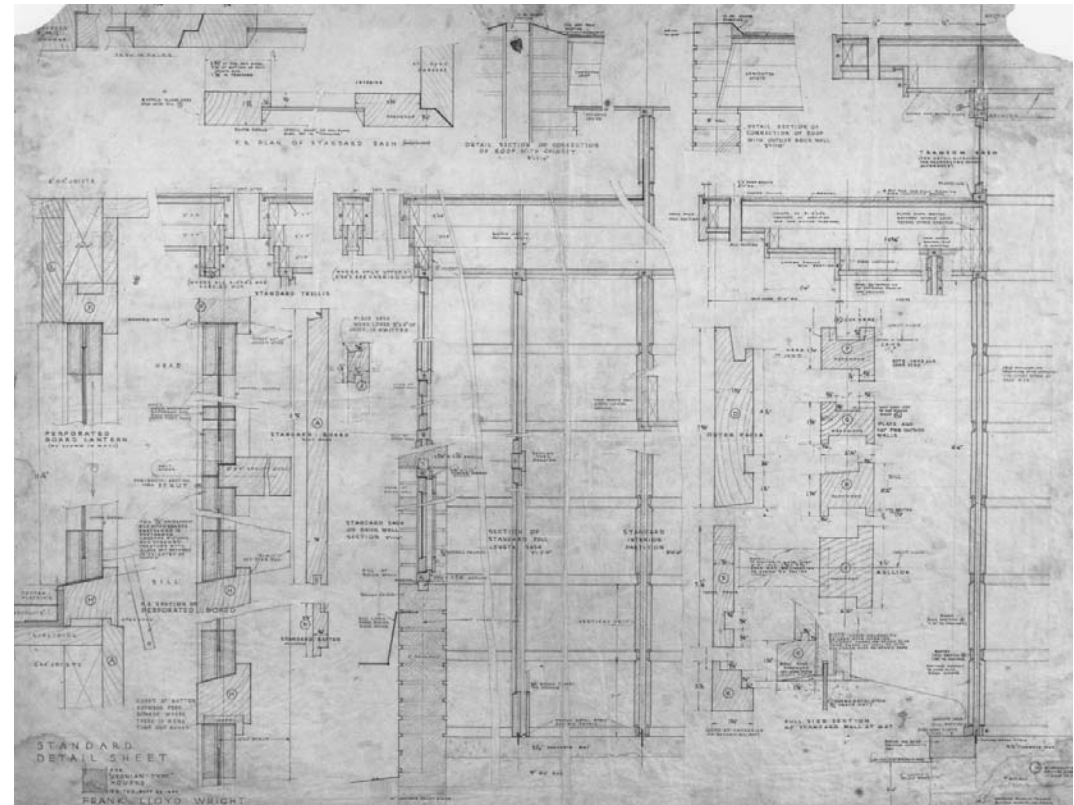
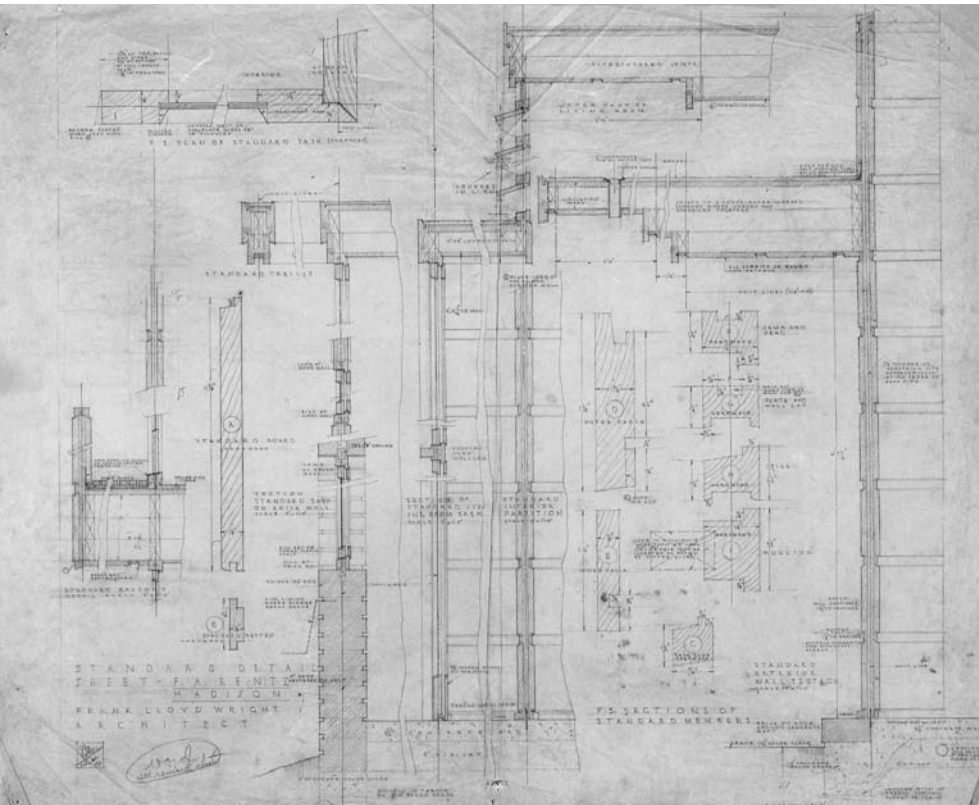
Im Rohrbuk Youth Hostel , Emil Roth, 1937



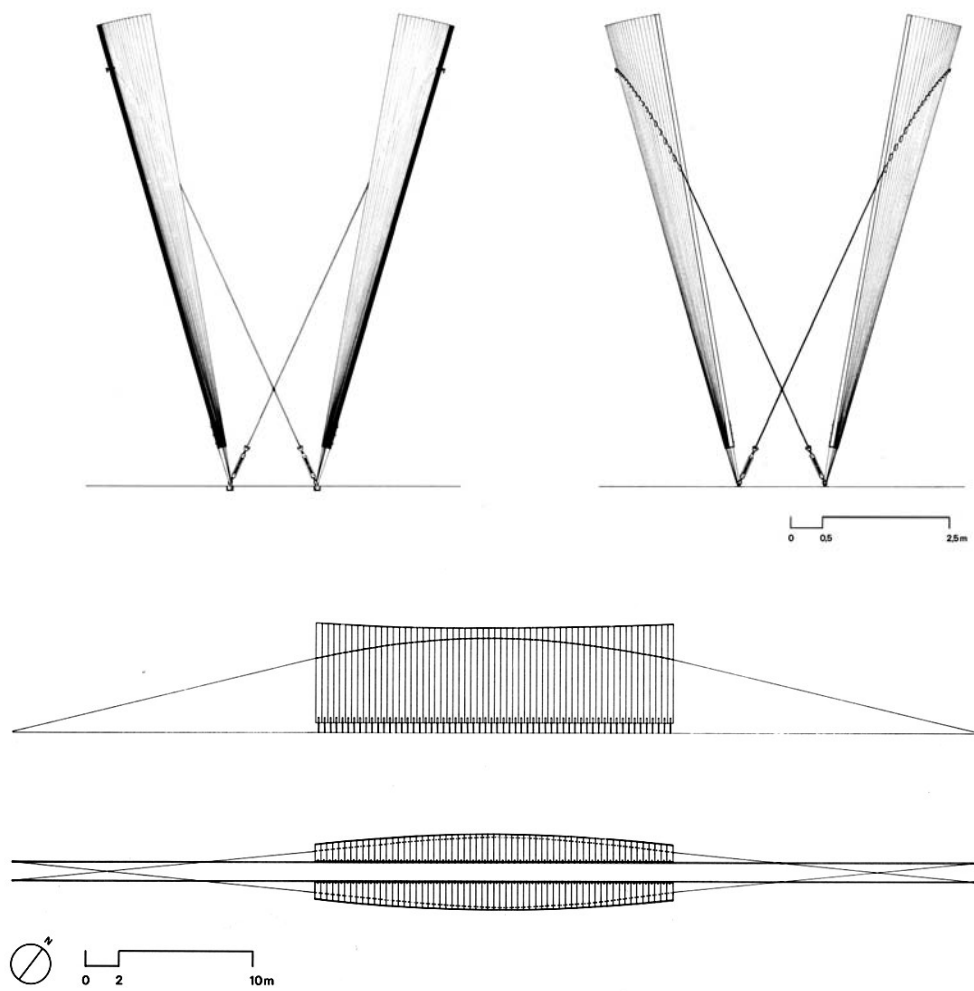
Pavilion of the Milano Triennale, Max Bill, 1951



Arne Jacobsen, Sorgenfri House, Lingby, 1959

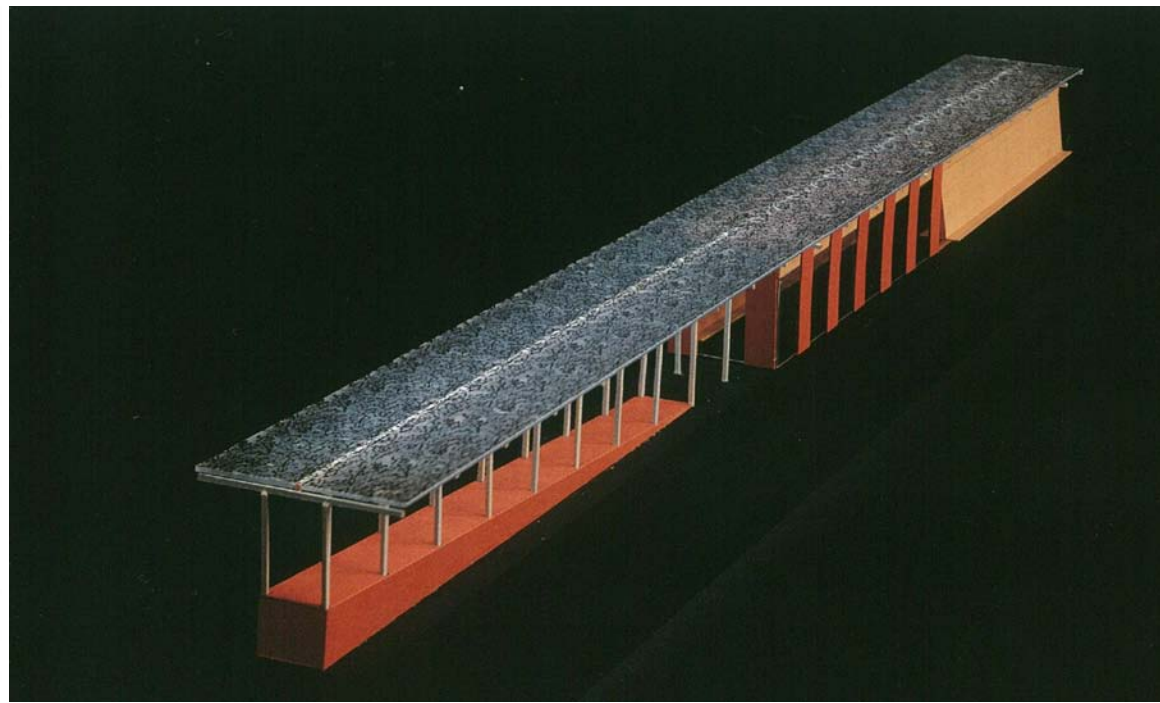
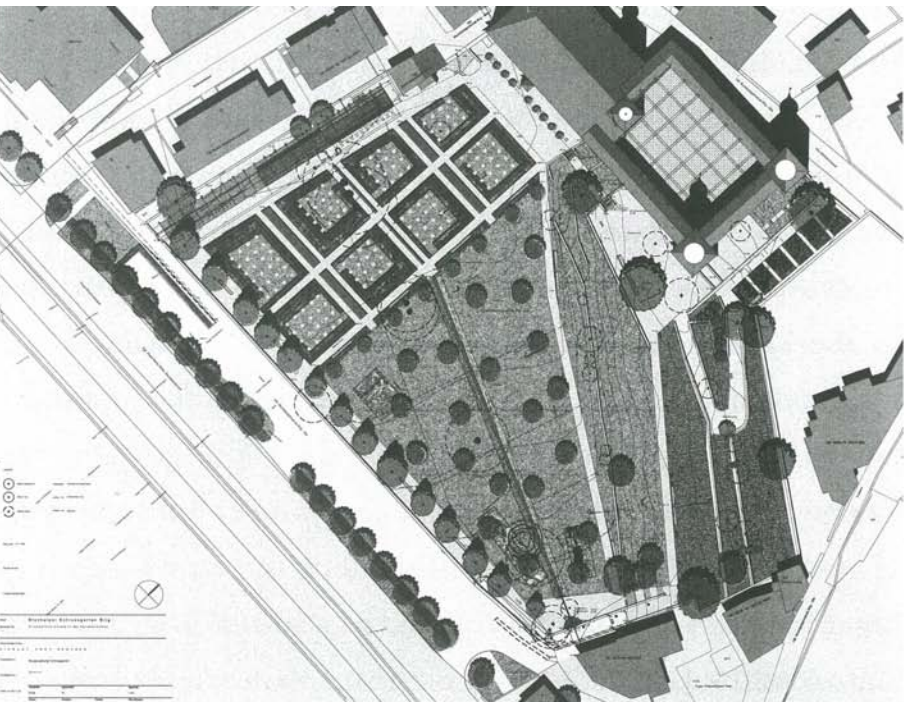


Frank Lloyd Wright, Usonian Houses, Standard detail sheet, wall construction, 1930

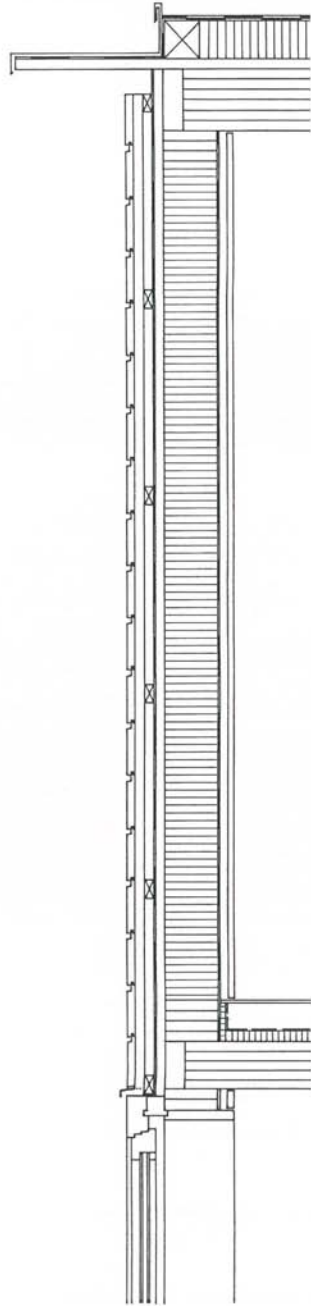
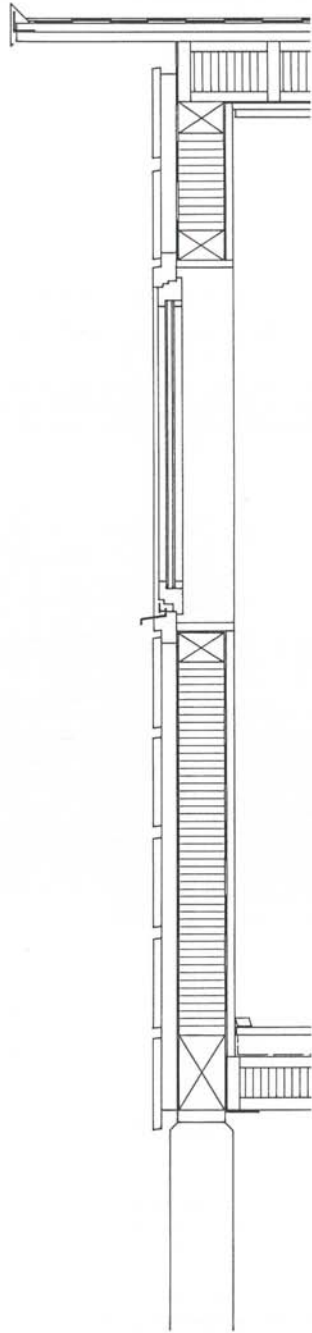
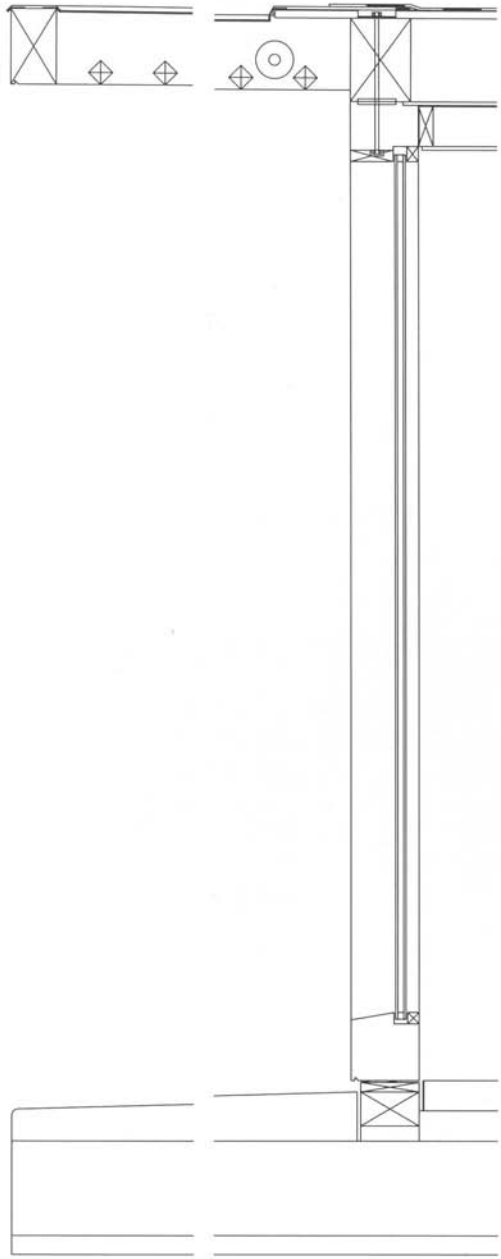


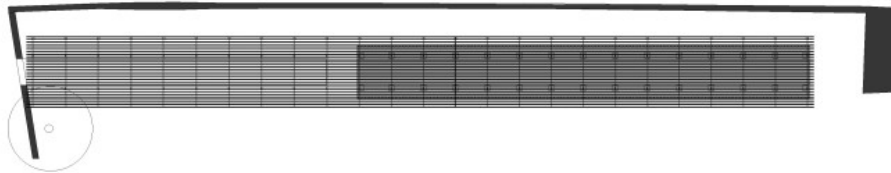
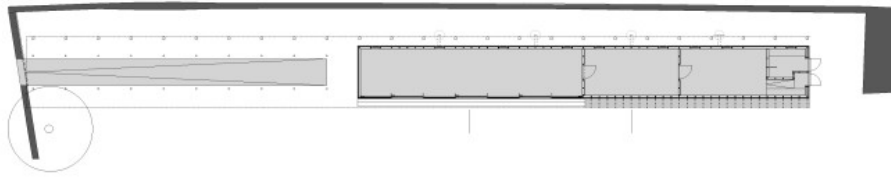
Installation in a street space, Biel, 1986



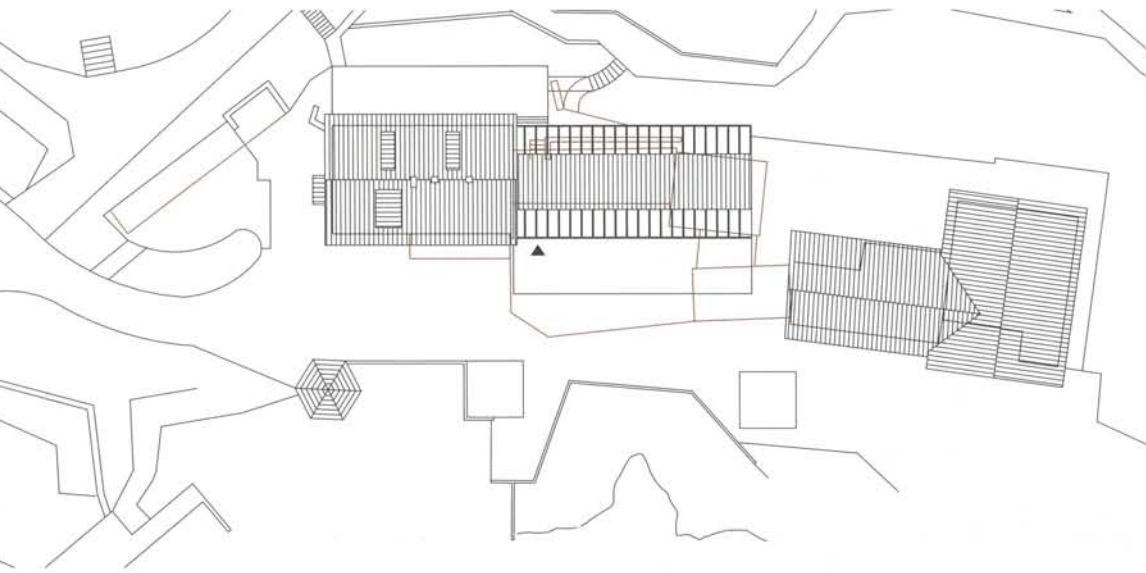


Wooden pavilion in the park of Stockalper Castle, Brig, 1998

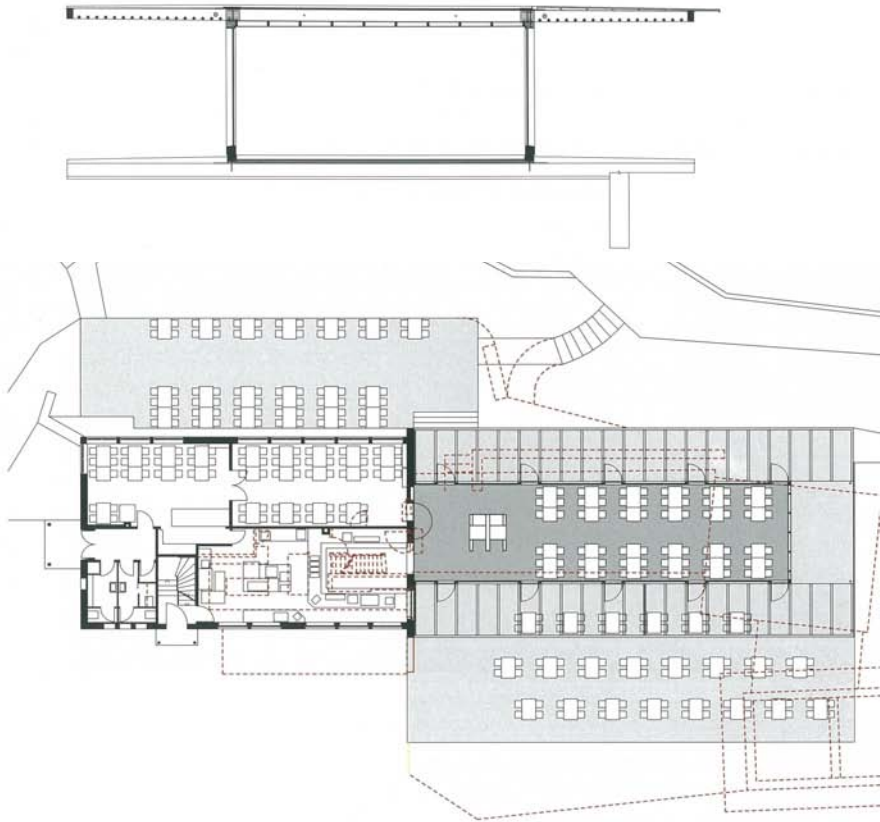




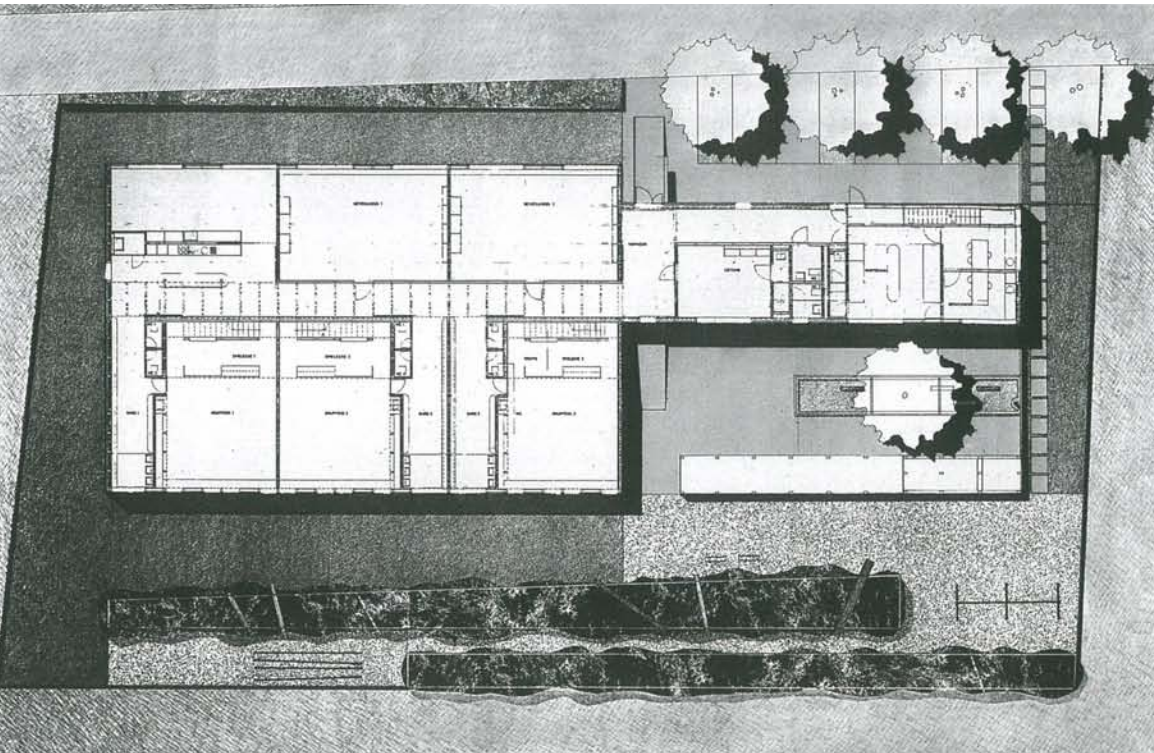
Wooden pavilion in the park of Stockalper Castle, Brig, 2002



Wooden pavilion for the game park, Langenberg, 1998



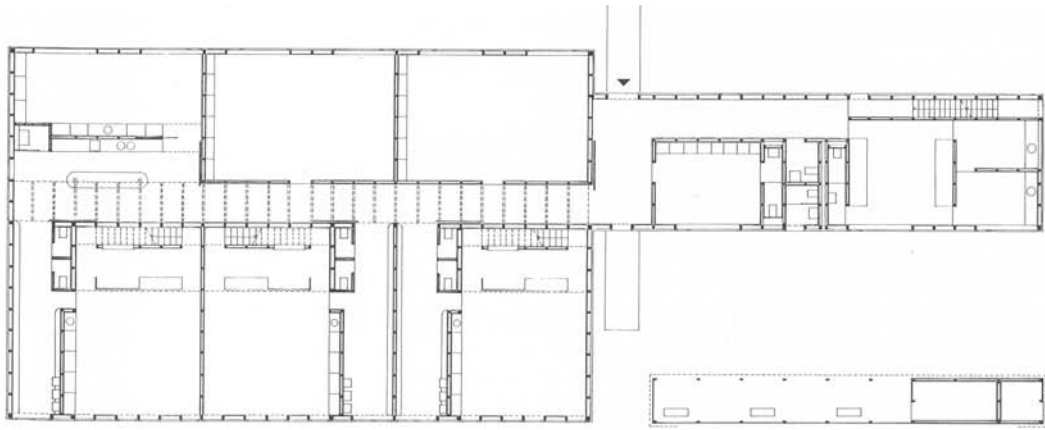
Wooden pavilion in the park of Stockalper Castle, Brig, 1998



Kindergarten am Schlatt, Lustenau, Austria, 1994



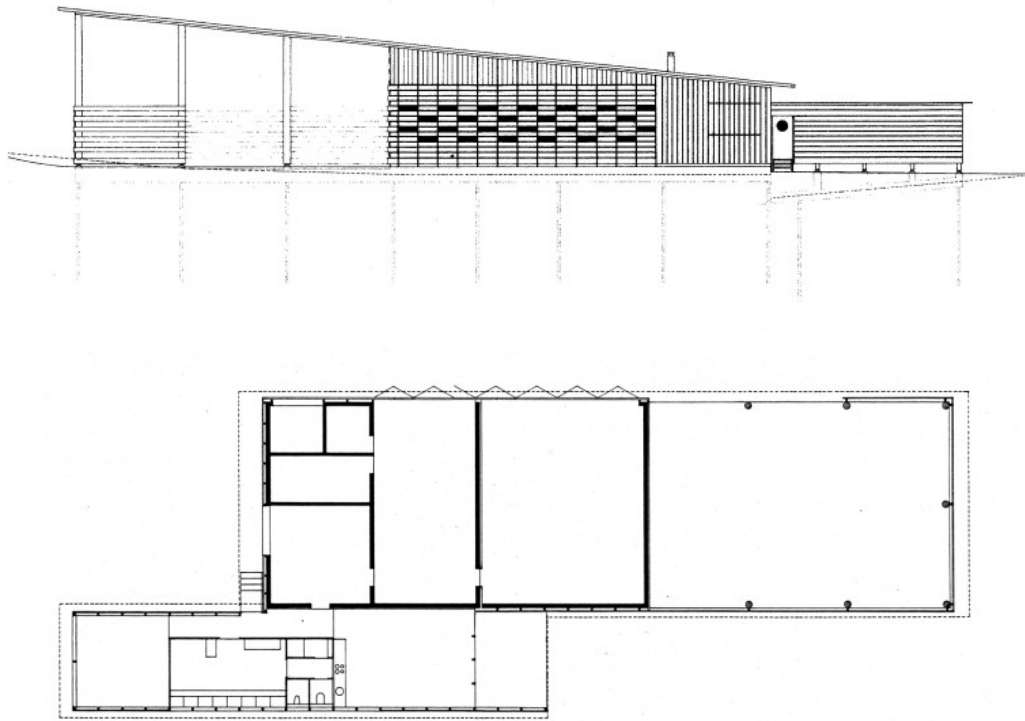
Longitudinal section



First floor 1:300



Kindergarten am Schlatt, Lustenau, Austria, 1994

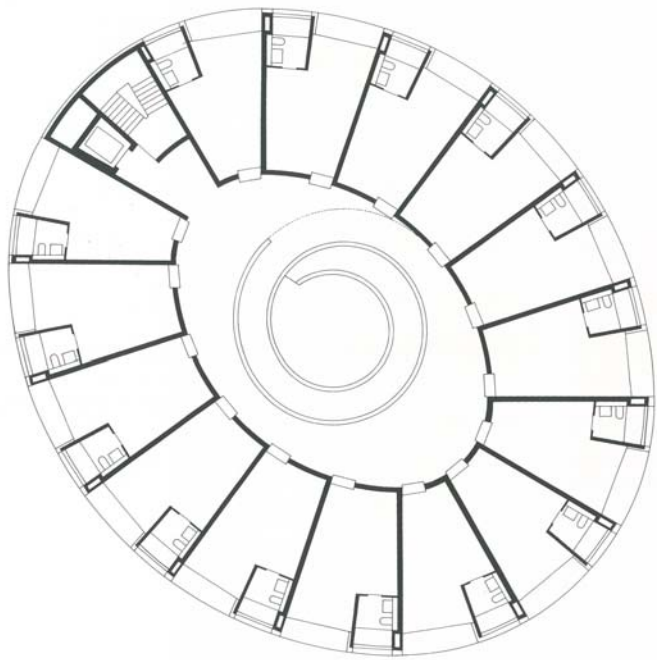


Forestry station, Turbenthal, 1994

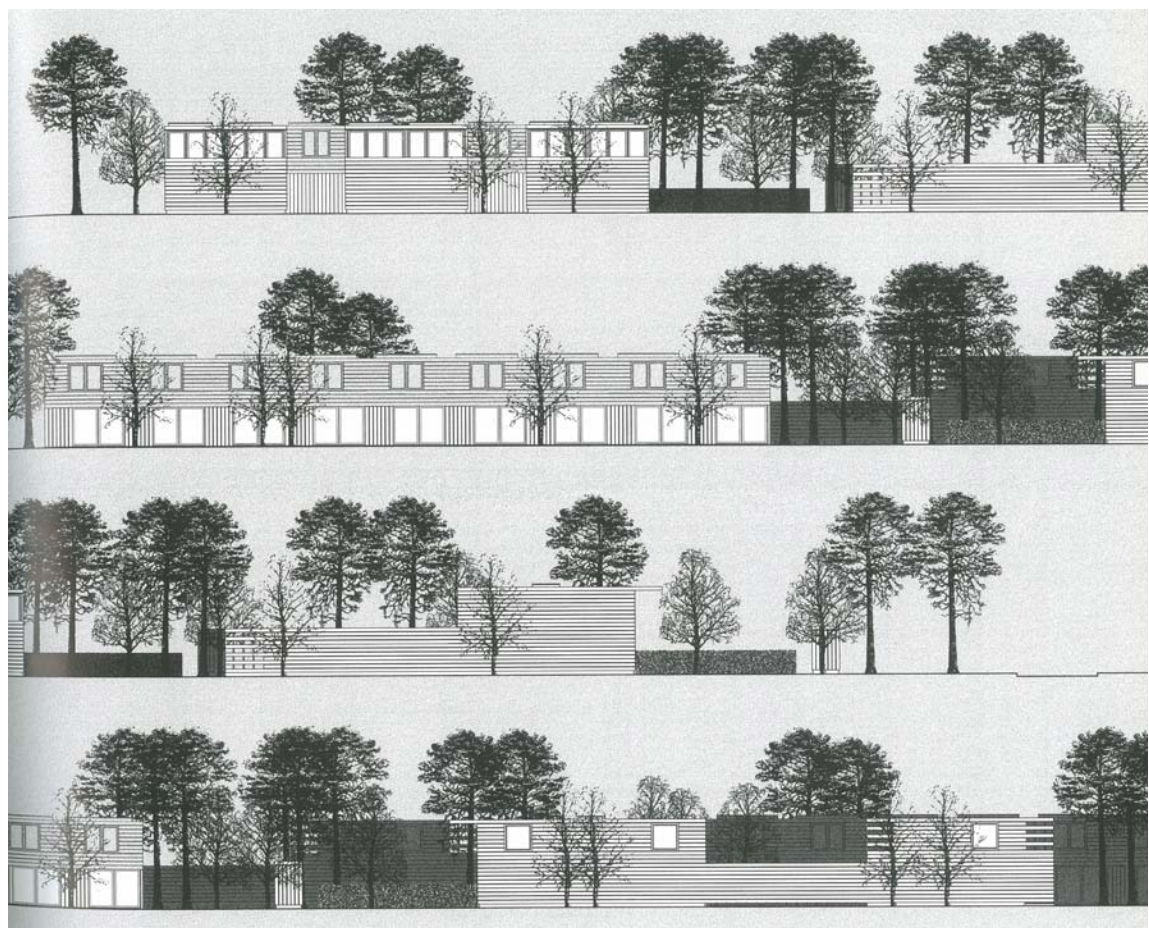




Forestry station, Turbenthal, 1994



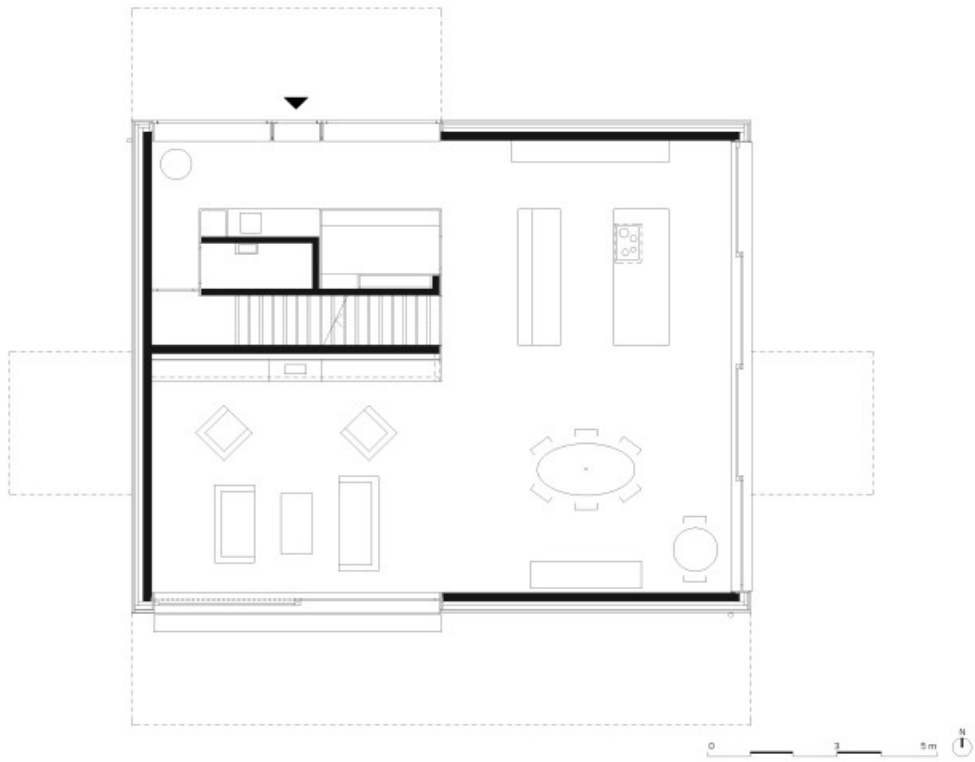
Refurbishment and new annexe building, 1998



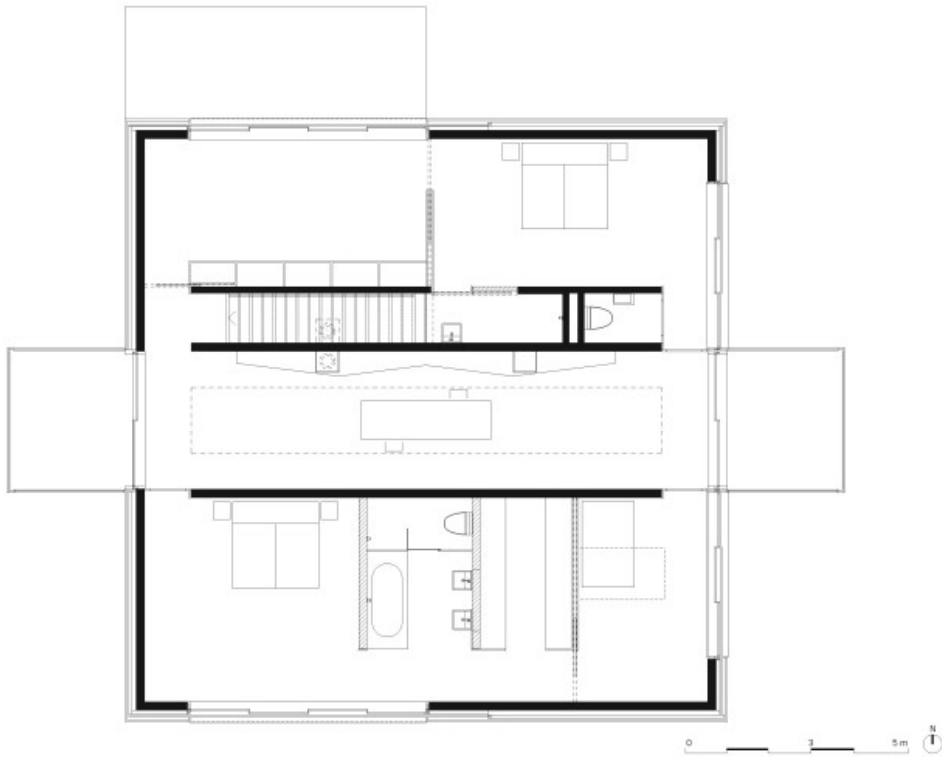
Condensed housing, Berlin, Köpenick, 1997



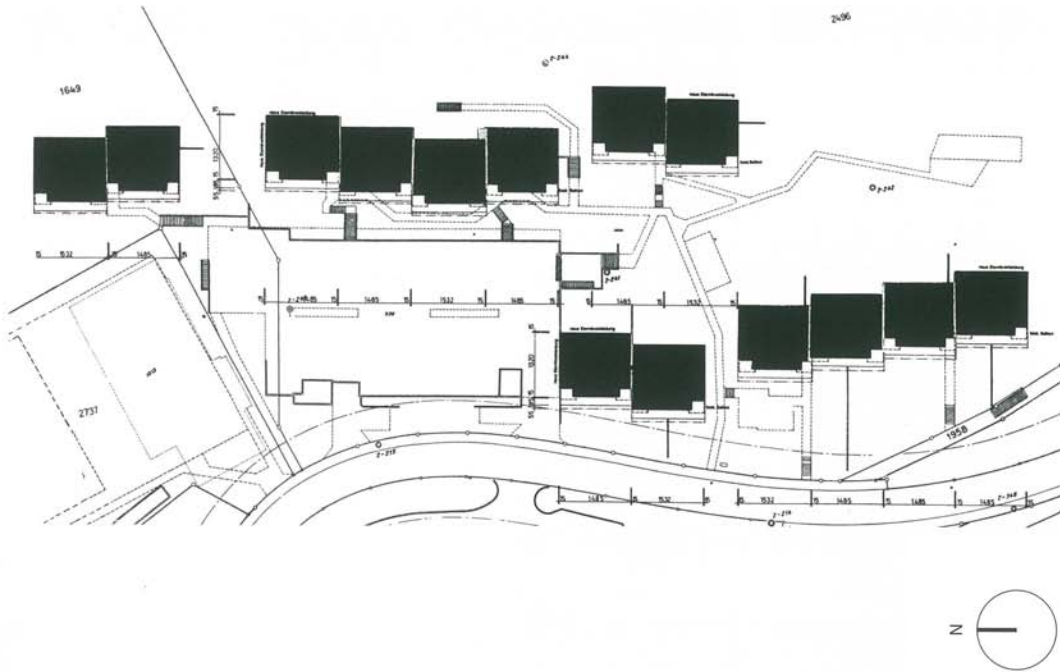
Condensed housing, Berlin, Köpenick, 1997



Square villa, Erlenbach, 2005



Square villa, Erlenbach, 2005



Facade renovation of Dettenbühl Development, 1996



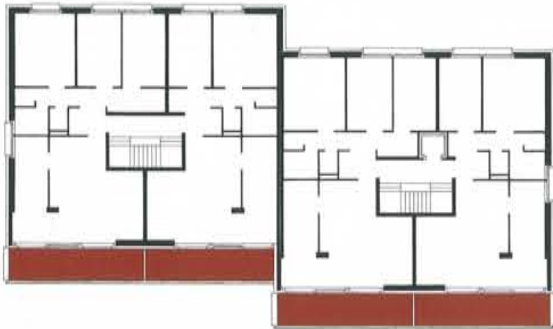
Facade renovation of Dettenbühl Development, 1996



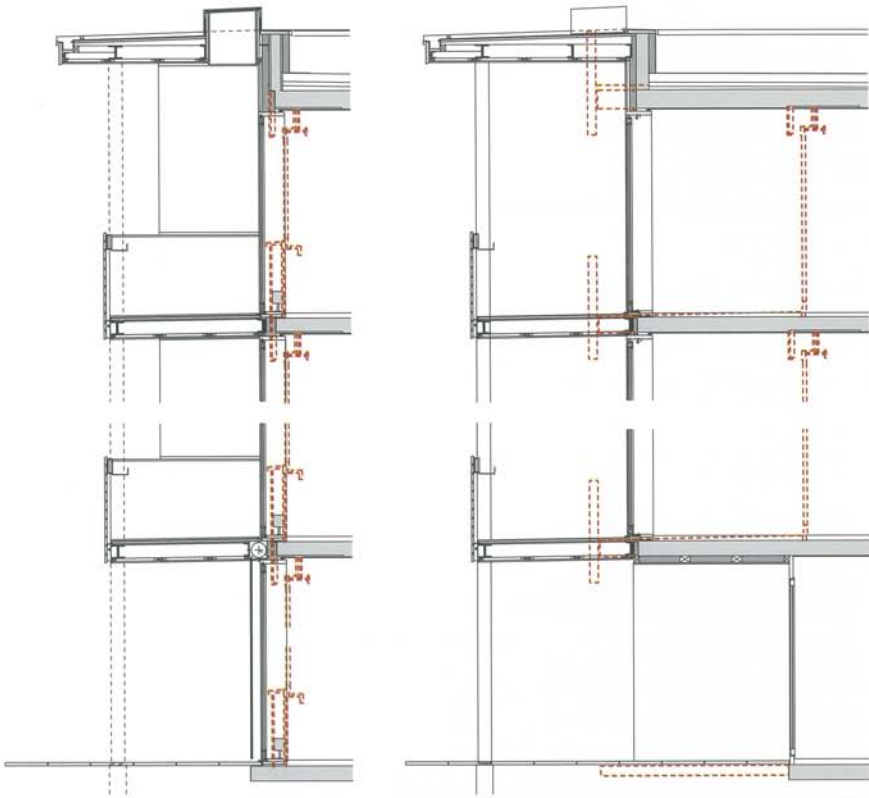
Before



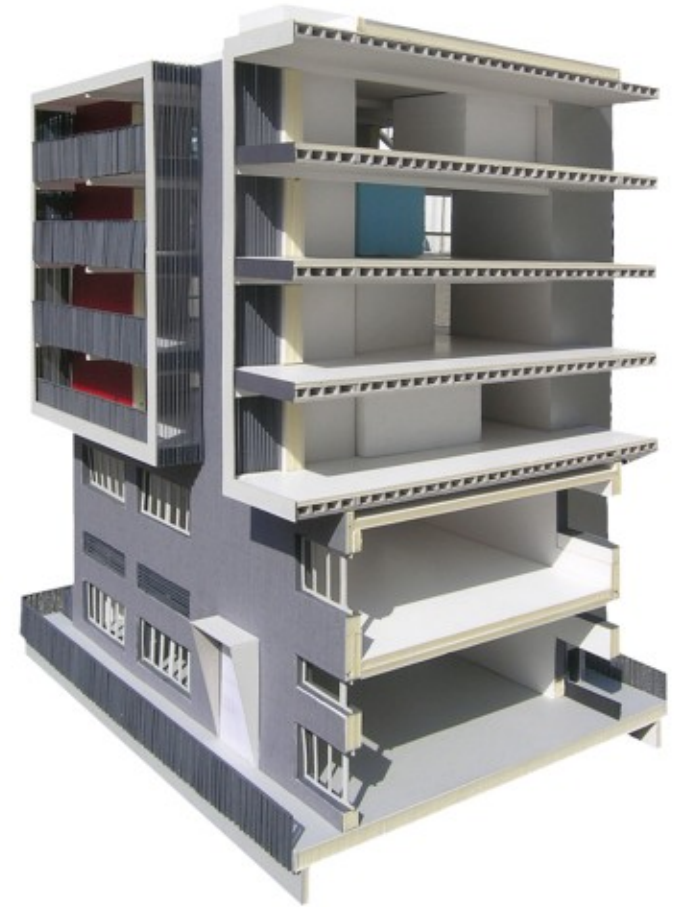
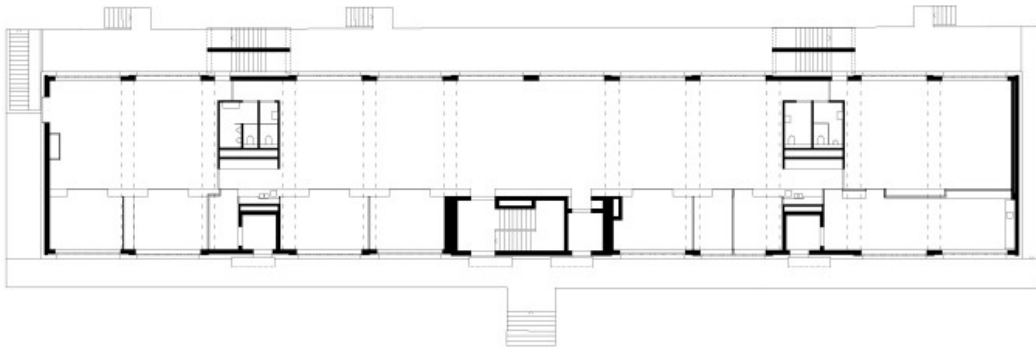
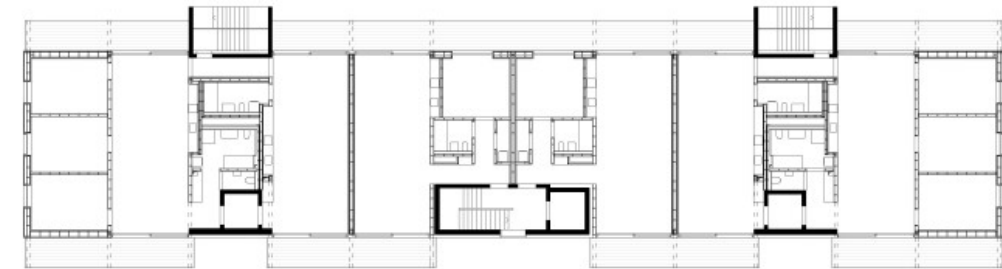
After



Facade renovation of Dettenbühl Development, 1996



Facade renovation of Dettenbühl Development, 1996



Conversion of a storage building, Giesshübel, 2013



Conversion of a storage building, Giesshübel, 2013